



# Certificate of Analysis

Powered by Confident Cannabis

## Ecofibre Kentucky

Cynthiana, KY 41031  
 jamie.paz@anandahemp.com  
 (859) 576-0876  
 Lic. #CBD

Sample: 1909DBL0351.8957

METRC Sample:  
 Batch #: 19R250260  
 Lot #: 19R250260

Strain: NA  
 Ordered: 09/27/2019; Sampled: 09/30/2019; Completed: 10/03/2019

## Full Spectrum Roll-on

Topical, Salve, Alcohol



Pesticides



Microbials



Mycotoxins



Heavy Metals



Foreign Matter



Solvents

### Terpenes

Analyzed by 300.13 GC/FID and GC/MS

14.676 mg/g  
Total Terpenes



Compound	LOQ	Mass	Mass	Relative Concentration
	mg/g	mg/g	%	
Eucalyptol	0.081	6.295	0.6295	
δ-Limonene	0.081	2.875	0.2875	
β-Myrcene	0.081	1.188	0.1188	
α-Pinene	0.081	1.160	0.1160	
p-Cymene	0.081	0.954	0.0954	
β-Pinene	0.081	0.667	0.0667	
γ-Terpinene	0.081	0.562	0.0562	
α-Terpinene	0.081	0.363	0.0363	
δ-3-Carene	0.081	0.241	0.0241	
Linalool	0.081	0.216	0.0216	
Camphene	0.081	0.154	0.0154	
α-Bisabolol	0.081	<LOQ	<LOQ	
α-Humulene	0.081	<LOQ	<LOQ	
β-Caryophyllene	0.081	<LOQ	<LOQ	
Caryophyllene Oxide	0.081	<LOQ	<LOQ	
cis-Nerolidol	0.052	<LOQ	<LOQ	
cis-Ocimene	0.052	<LOQ	<LOQ	
Guaiol	0.081	<LOQ	<LOQ	
Isopulegol	0.081	<LOQ	<LOQ	
Terpinolene	0.081	<LOQ	<LOQ	
trans-Nerolidol	0.028	<LOQ	<LOQ	
trans-Ocimene	0.028	<LOQ	<LOQ	

### Cannabinoid Relative Concentration

Analyzed by 300.18 UHPLC/PDA

0.616 mg/g  
Δ9-THC + Δ8-THC

16.625 mg/g  
CBD

18.710 mg/g  
Total Cannabinoids

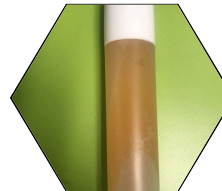
Not Tested

pH: NT  
Aw: NT

Not Tested  
Homogeneity

Compound	LOQ	Mass	Mass	Relative Concentration
	mg/g	mg/g	%	
CBC	0.058	0.704	0.0704	
CBCa	0.058	<LOQ	<LOQ	
CBD	0.058	16.625	1.6625	
CBDa	0.058	<LOQ	<LOQ	
CBDV	0.058	0.150	0.0150	
CBDVa	0.058	<LOQ	<LOQ	
CBG	0.058	0.615	0.0615	
CBGa	0.058	<LOQ	<LOQ	
CBL	0.058	<LOQ	<LOQ	
CBN	0.058	<LOQ	<LOQ	
Δ8-THC	0.058	<LOQ	<LOQ	
Δ9-THC	0.058	0.616	0.0616	
THCa	0.058	<LOQ	<LOQ	
THCV	0.058	<LOQ	<LOQ	
THCVa	0.058	<LOQ	<LOQ	

Total THC = 0.877 x THC-A + Δ9-THC + Δ8-THC; Total CBD = CBDa \* 0.877 + CBD



*Stacy Gardalen*

Stacy Gardalen  
Quality Control

*Glen Marquez*

Glen Marquez  
Quality Control



4439 Polaris Ave  
Las Vegas, NV  
(702) 728-5180

www.dblabslv.com

The reported result is based on a sample weight with the applicable moisture content for that sample. LOQ = Limit of Quantitation. Pesticide LOQ = Instrument Limit of Quantitation, NA = Not Analyzed. ND = Not Detected. NR = Not Reported. NT = Not Tested. PGR = Plant Growth Regulator. Unless otherwise stated all quality control samples performed within specifications established by the Laboratory. This product has been tested by DB Labs, LLC (MME# 61887736101164525768) using valid testing methodologies and a quality system as required by Nevada state law. Edibles are picked up prior to final packaging unless otherwise stated. Values reported relate only to the product tested. The uncertainty of measurement associated with the measurement result reported in this certificate is available from the organization upon request. DB Labs makes no claims as to the efficacy, safety or other risks associated with any detected or non-detected levels of any compounds reported herein. This Certificate shall not be reproduced except in full, without the written approval of DB Labs.